

# AMERICAN REINFORCED PLASTICS

## SPECIFICATIONS - 60" ASSISTED LIVING TUB/ SHOWER COMBINATION

### MODELS#

TS-6034-R-AST, TS-6034-L-AST

### COMPOSITION

American Reinforced Plastics bath products are manufactured using specially formulated sanitary polyester gel coat, backed with a heavy fiberglass reinforcing. The surround portion is a sandwich panel construction with a polyurethane core, built to exceed the standards of A.N.S.I. Z 124-1, Z 124-2, and UPC-11-60.

### DESIGN FEATURES

- Shower stalls are of one piece construction eliminating all possible leakage.
- Factory pre-leveling makes installation quick and easy. Ideal for residential and commercial applications.
- Grab bars are shown for typical assisted living applications. Custom placement is available. Units with grab bar feature have extra wood reinforcement laminated into the side walls for additional support. -lease specify right or left hand plumbing.
- Available in simulated tile option, models# Tile TS-6034-R-AST, Tile TS-6034-L-AST.

### MAINTENANCE

Only easy to use liquid cleaners are required to maintain the bright, smooth surface in a like new condition. Abrasive cleansers must not be used.

### WARRANTY

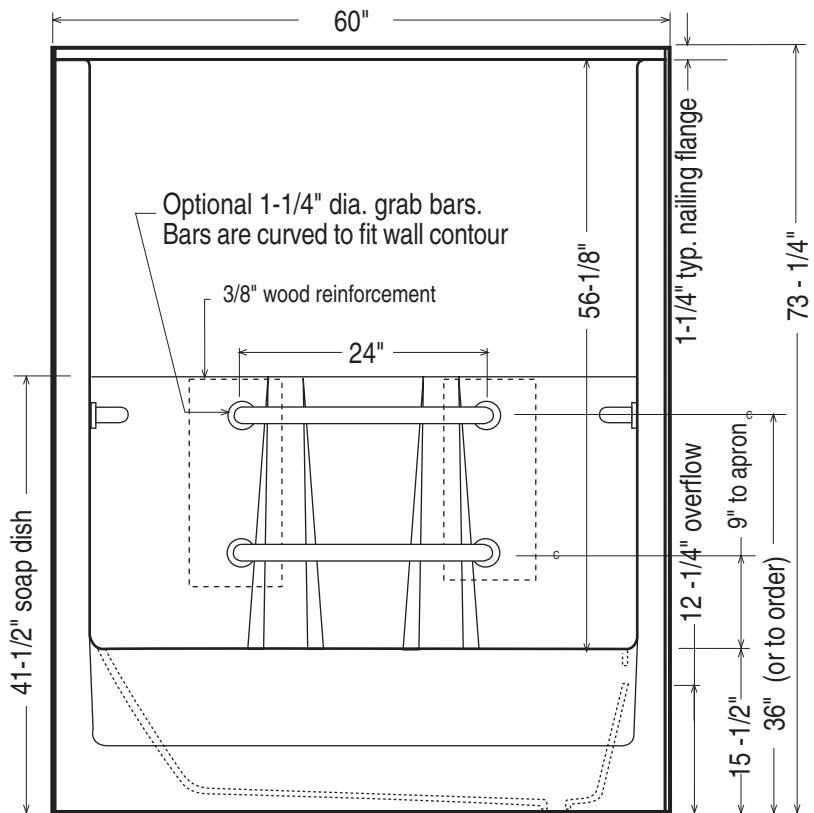
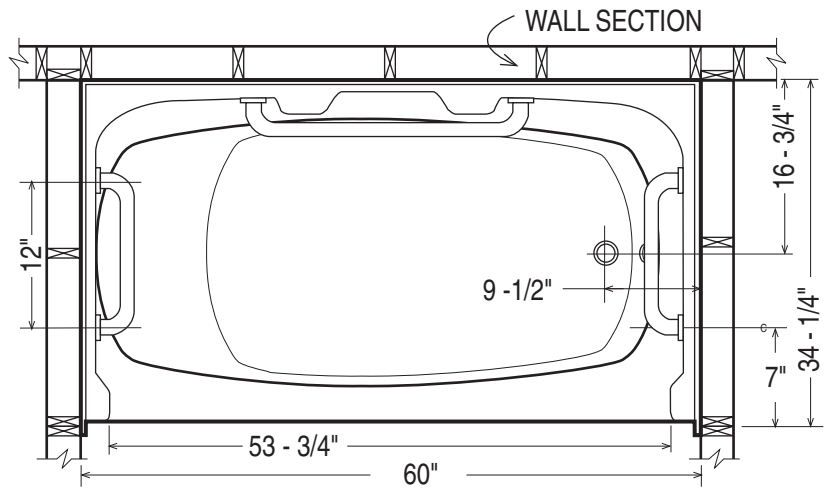
Five year warranty against factory defects.

### COLORS

Available to match current colors of the major fixture manufacturers.

### ARCHITECTS SPECIFICATIONS

The tub-shower units shall be one-piece, heavy duty, fiberglass reinforced polyester, gel-coated to provide sanitary, unbroken clean lines and a smooth surface. Wood reinforcement shall be used in wall panels to accept grab bars. Grab bars must be mounted on both side walls of the stall, with two horizontal bars across the back wall located as shown in drawing. Special reinforcing, contouring and sandwich panel construction with a polyurethane core gives strength to exceed A.N.S.I. Z 124-1, Z 124-2 and UPC - 11 - 60 standards. The units shall be self-supporting and the walls shall have nailing flanges on front and top edges and warranted against factory defects for five years. The under portion of the tub/shower units shall be supported with integrated hi-density resin system providing stable bearing against the floor and allowing no give to the bottom when installed. The unit shall be an American Reinforced Plastics tub/shower unit as manufactured by American Reinforced Plastics, Inc., 8209 Pacific Highway East, Tacoma, Washington, 98422.



Door Opening Measurement:  
Width: 53 - 3/4", Height: 56-1/8" max.



AMERICAN REINFORCED PLASTICS

8209 PACIFIC HWY. EAST, TACOMA, WA 98422 • (253) 922-5808 • FAX (253) 922-2036 • WWW.ARPBATHTUBS.COM